

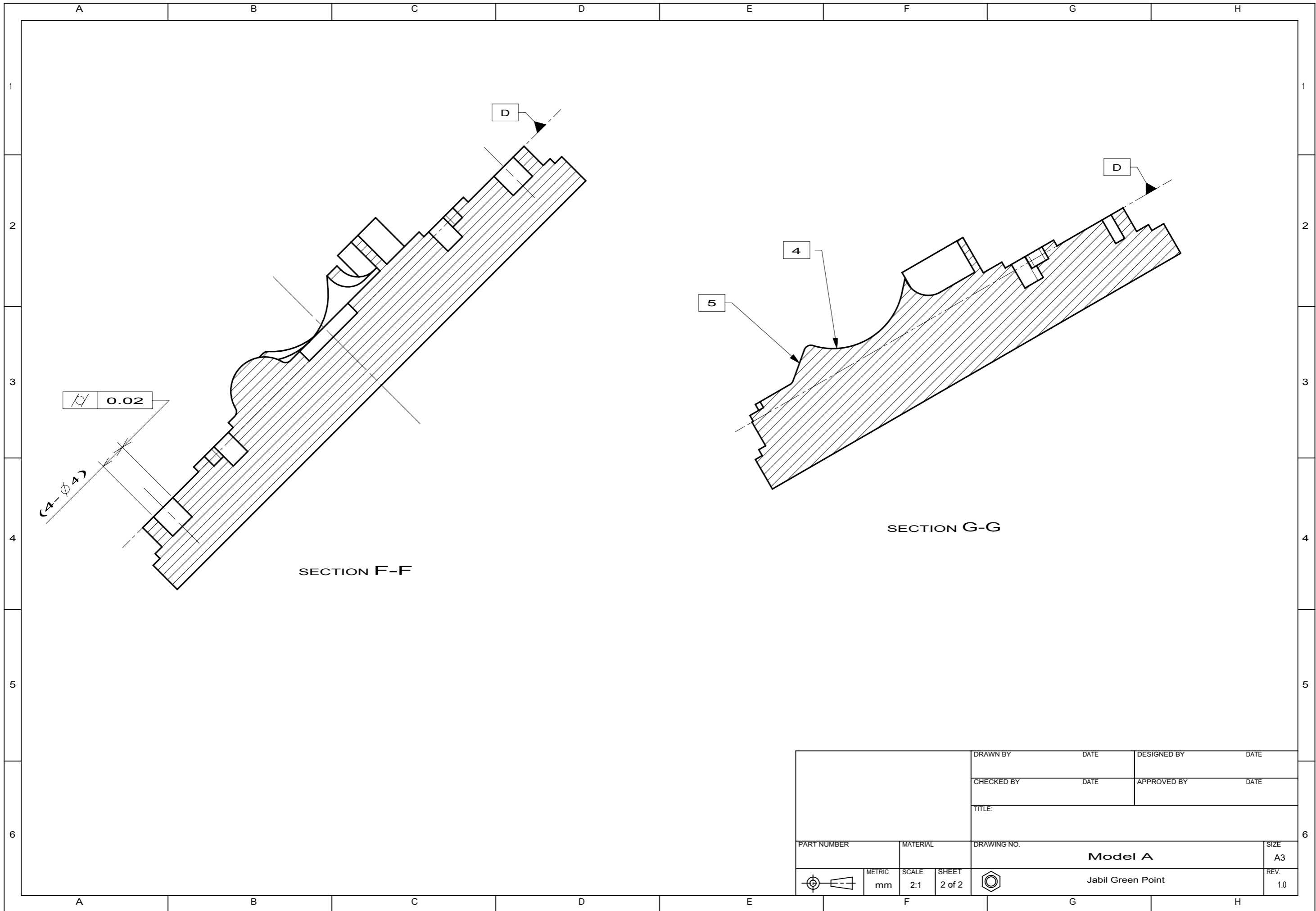
REV.	DESCRIPTION	ECN NO.	DATE
1.0	Add golden sample's name and tangency break		11.11.09

- Note:**
1. Material:
Type1: SUS304 1/2H
Type2: AL 6063 T6
 2. Surface roughness of samples' "4" area must be visually equal or better than golden sample:
Model A-GCS-SUS, Model A-GCS-AL
 3. Measure roughness (Ra) of samples' "5" area using contacting type measurement equipment per and result must be equal or better than golden sample.
 4. Measure (Ry) of samples' "6" area cutter mismatch perpendicular to cutter path using contacting type measurement equipment and the result must be equal or better than golden sample.
 5. Chatter mark and facet effect and tangency break of samples' "7" area must be equal or better than the golden sample.

DRAWN BY	DATE	DESIGNED BY	DATE
CHECKED BY	DATE	APPROVED BY	DATE

TITLE:			
PART NUMBER	MATERIAL	DRAWING NO.	SIZE
		Model A	A3
Jabil Green Point			REV.
			1.0

METRIC	SCALE	SHEET
mm	2:1	1 of 2



0.02

(4- ϕ 4)

SECTION F-F

SECTION G-G

		DRAWN BY		DATE		DESIGNED BY		DATE	
		CHECKED BY		DATE		APPROVED BY		DATE	
		TITLE:							
PART NUMBER		MATERIAL		DRAWING NO.				SIZE	
				Model A				A3	
		METRIC	SCALE	SHEET			REV.		
		mm	2:1	2 of 2			1.0		
		Jabil Green Point							